



Turtle Rock Newsletter

The Best Place on Palmer Ranch

August 2021

INSIDE this ISSUE... Page

President's Letter	2
Mailbox Update	3
Treasurer's Report	4
Manager's Report	6
Communications	7
ARC Report	8
Landscape and Grounds	9
Love Where We Live!	10
TR Women's Club	11
TR Men's Club	12
Haiku	12
Calling All Photographers!	13
From the West Corner of...	14
Got Fish?	15
Natural Assets Comm.	16
Quotable Quotes	17
Bird Notes	18
Chalk Art	19
Information	20

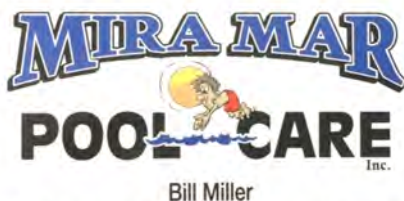
The Turtle Rock Newsletter proof readers check articles for errors in spelling, punctuation, grammar, and sentence structure.

The author of each article is responsible for the factual accuracy.

Congratulations to our winner Gary Wells



He found the hidden, outlandishly inappropriate word "**xertz**." See more information about this word and monthly contest on page 20. Gary's name was drawn from all other correct entries to receive a \$25 gift card to Publix, donated by:



941-926-POOL wcmiller33@gmail.com

**Full Service Pool
Maintenance**

**Owned and operated
by TR Residents**

A Letter from the President

By David Bryan



Greetings Turtle Rock:

First, I would like to welcome **Bob Kresnik** as our new dedicated property manager. Being a dedicated property manager means that Bob will focus entirely on Turtle Rock, will not be distracted by other properties, and will be onsite 5 days a week. Bob is replacing Ed Olson, who is moving to full time duties as vice president of Sunstate property management. Bob is very qualified and has many years of experience as a property manager, and I am confident he will do a great job. I encourage everyone to stop by the clubhouse to meet and welcome Bob. Ed will continue to be involved with Turtle Rock as he will support Bob through his new role as Vice President of Sunstate Management.

Our contractor Crosscreek Environmental has completed the shoreline restoration on ponds 10 and 11 located on the north and south side of Nice Way in Somerset. Crosscreek will start shoreline restoration on pond 13 (Sabal Lake) by early September and will start planting aquatic plants in designated ponds by the first of August, weather permitting.

The issue of overwatering landscape and lawns has come up in the community. Generally, many of us are overwatering, especially now during the

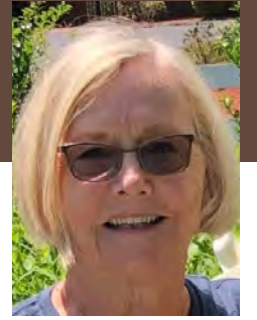
rainy season. Overwatering can be damaging to our turf, and coupled with overspray (allowing sprinklers to extend to driveways, streets or neighbor's property) can cause excess water to flow into our ponds, which contributes to algae growth. I encourage everyone to either turn their sprinkler systems off during the rainy season, or reduce watering to no more than one day a week for 10 minutes. Since the HOA pays for the reclaimed water, reducing usage will also save money. We plan to consult with Mollie Holland of Sarasota County to help develop watering guidelines for the responsible and efficient use of our sprinkler systems. The need for running our sprinklers changes with the seasons, so guidelines will help prevent over watering and overspray. Hopefully the guidelines will be included in the revised TROM.

At this point I also need to mention that the reclaimed water we have for our irrigation will quickly deteriorate the finish on our new mailbox posts. Many homeowners' spray pattern have heads that are very close to the posts, guaranteeing a douse of corroding water each time the system runs. We request that you (or your contractor) turn the specific head that waters the area around your mail-



Mailbox Update

By Roberta Maloney



We were caught by surprise (again) when ASAP notified us that there would be another delay in getting the materials to continue with the installation of the mailboxes. The good news is that more than half of the beautiful mailboxes have been installed prior to this latest interruption.

Perhaps the new materials will have arrived by the time you are reading this. Once the installation resumes, the contractor can install up to 100 mailboxes per week. While we do our best to project installation dates, we have found that installers are often *ahead* of schedule. If you haven't done so already, **please remove your landscaping and hardscaping now!**

Below is the order of the streets still to be completed during August/September:

Sweetmeadow Circle (4673-4700)
Meadow Rush Loop
Deerbrook Circle
Wildflower Court, Little Brook Court, Nice Way
Sabal Lake Circle
Savannah

Keep your eye on the schedule as posted on the Turtle Rock website: <http://www.myturtlerock.com>. Under the "Community Association" tab, click on "Mailbox Task Force" to see the latest information about the project. Be on the watch for email blasts from Sunstate Management and look for signs around the neighborhood and at both entrances that will announce where installation is scheduled and when. If you have questions about the preparation of your site, please contact one of the task force members listed below:

Deerbrook Circle – Bob Oram
Meadow Rush Loop – Bob Oram
Sabal Lake Circle – Kathrin Harris
Savannah (all streets) – Patty Fleming
Sweetmeadow Circle – Kathy Wells
Wildflower Ct – Harry Hopes

Many homeowners have inquired about cleaning the mailbox and post. Please use a soft cloth and water or a very mild detergent (if needed) when cleaning. Do not use a bristle brush or scouring pad on the post or the box. If you see a scratch or other need for touchup paint, please contact the Turtle Rock Property Manager. All maintenance and repairs, other than routine cleaning, will be handled by Turtle Rock. Bloomings has placed sod (or will soon) around posts that were surrounded by dirt; if there are dry periods, please water this small area.

Mailbox Update, Continued from page 3

Reminders:

Disposal of landscaping and hardscaping waste will be handled by Waste Management. Pavers, bricks, stones and similar are considered “construction debris” by Waste Management. Each household is entitled to put at the end of the driveway for weekly pick-up four 32 gallon containers of debris weighing no more than 40 pounds each. Yard waste should be cut & bagged (40 lbs maximum) or bundled in 4 foot long bundles (40 lbs max)

No plantings or curbing will be allowed around the new posts. This will make maintenance easier and provide a uniform appearance.

Please do not touch your new mailbox or post for at least 24 hours while the cement hardens. Your mail delivery will be held for one day by the postal service and delivered the following day.

Please do not allow your pets to use the posts as their bathroom!

Your cooperation is appreciated by everyone.

Please advise your landscaper to be careful when trimming the grass around the donut around the mailbox post so as not to damage the paint.

Let's keep the latest beautification achievement looking great!

Please send any comments or questions to communications@myturtlerock.com.

President's Letter, Continued from page 2

box off, or direct it to spray away from the post if possible.

July Association Meeting

The Board approved the following proposals:

Ponds Committee – The committee changed its name to Natural Assets Committee to better reflect its increased area of responsibilities including ponds, preserves, wetlands and the nature trail.

Communications Committee – No proposals were presented.

Landscape Committee –

1. Replace 18” plants with 36”-42” plants, irrigation to support the new plants, and hydroseed to cover bare

soil between the rear of some Nice Way homes and Honore Ave.

2. Add 60 lamp posts to the list to be painted that were left off the original approved request.
3. Replace two message boards that were not included in the original street sign replacement project.

Finance Committee – No proposals were presented.

August 3, 2021 at 6:30 pm is the next Board of Governors meeting. The meeting will be held in the clubhouse (limited seating available), and will also be available on ZOOM. Please plan to attend.



Treasurer's Report

By Robert Oram



YTD Ending June 30, 2021

	Actual	Budget
Assessments and other income	\$733,173.80	\$731,743.00
Operating Expenses*		
General and Administrative	\$191,327.79	\$205,870.00
Common Grounds	91,393.93	107,741.50
Access Control/Gatehouse	131,520.35	135,293.00
Facilities Maintenance	64,325.02	96,875.00
Utilities	37,051.27	41,500.00

*Actuals are lower because several maintenance and other expenditures have been deferred to later in the year.

Reserve Expenses

Contribution	\$144,463.50	\$144,463.50
Site Improvements	-140,628.77*	
Furn. Fixtures & Equip.	-10,992.46**	

*includes \$70,811 ASAP Mailboxes, and
\$47,943 Crosscreek Environmental (erosion control)

**includes \$ 6,070 ABDI (gate access software and cameras)

Assessments

Outstanding HOA Fees	\$3,324.84 (1-90 days)
	3,027.47 (90+ days)
Total	6,352.31

Management Report

By Ed Olson, Sunstate



I am happy to announce that Turtle Rock has a new dedicated manager: *Bob Kresnik*. He and I have been working together over the last month bringing him up to speed on the community. With over 13 years of community association experience, Bob will be a great fit. Please stop by the community center to say hello. You can reach Bob at 941-870-9855 or communitymanager@myturtlerock.com.

I am taking on a larger role in my position of Vice President of Sunstate Association Management Group Inc, but I will still be dropping by Turtle Rock weekly, and will also be Bob's backup. It has been a great four and a half years, and I want to thank everyone for that. There are too many people to name, but the volunteers who dedicate countless hours to make Turtle Rock a great place to live are at the top of the list. You know who you are, and I want to thank each and every one of you for the help and support.

August is here, and so is the afternoon thunderstorm pattern (usually). This is the time of year to make sure that your rain sensors on your irrigation system are working properly. There is a lot of standing water between homes where original swales are no longer functioning as intended. This not only makes it hard for you and your neighbor's lawn people to cut, it also promotes mosquitos and other unwanted pests. Too much reclaimed irrigation water also causes problems with our stormwater retention ponds. Excess runoff, plant matter, and fertilizer cause algae blooms, making our lakes look terrible— see photo to right.



As always please e-mail or call either Bob or me with any questions or concerns.
Thank you,

Ed Olson

Vice President/LCAM

Sunstate Management

941-870-9855

edward@sunstatemanagement.com

Communications Committee

By Grace Sammon



The entire Turtle Rock Community applauds and offers special thanks and appreciation to **Judy Bentz** for her years of service and dedication, not only to Turtle Rock as a whole, but specifically to the Communications Committee. Judy is a founding member of the Communications Committee and, as such, built the ground work for all residents to be informed and included in the news and activities of our community. She gracefully and efficiently took up the newsletter mantle from the late Ron Green and others, and provided us with the electronic newsletter we have come to enjoy and rely on. Judy will stay involved in our community but is passing the torch for the development and assembly of the newsletter to others. Thank you, **Judy, you rock!**



Regarding the newsletter: Thanks to **Kathrin Harris** this month for her help with the assembly and distribution of this newsletter. Also, residents and owners should be seeing a sign in the gate message boxes on the 1st of each month alerting you that the newsletter has been delivered to your email. If you are *not* getting the email newsletter directly, or know of someone who is not, please contact the management office and make sure they have your correct email address. Finally, in the coming months, the Communications Committee will be reviewing the newsletter format, length, and types of articles that should be included in future issues. If you have ideas or feedback on this please contact the Communications Committee Chair Angela Hilton Calvo at anghiltonsrq@gmail.com



Did you know that, on average, we have had seven homes “turn over” each month to new residents within the past year? The Welcome Team has developed a welcome package and uses this to meet and welcome residents. We would love to expand the group of volunteers who help in this effort. Ideally, we would have neighbors greeting neighbors in person. If you are interested in helping, we supply all the materials and the five minutes of “training” it takes to be good at this job. Once a month you would get a short list of people to welcome. We hope you join us. If you are interested, please contact Grace Sammon at gmsammon@gmail.com.

ARC Report

By Chuck Barackman, Secretary ARC



THE ARC PROCESS – A Look Behind The Curtain

Ever wonder what happens once you submit an Architectural Review Committee (ARC) request? We thought a brief overview of the processes of receiving, managing and decision-making may be of interest to Turtle Rock residents.

The process begins, of course, when a resident decides to make an exterior modification to their residence...landscaping, a new roof, new windows and doors, painting etc. The ARC recently developed two new forms for residents to document these requests. We are grateful and pleased to note that every request received since then has been made using the new forms. They provide more specific guidance as to what information is needed and have greatly reduced the need for follow-ups.

Once a resident submits an ARC request to the TR Community Association Manager (CAM), it is reviewed for completeness, scanned, and emailed to the five-member committee – all residents of Turtle Rock. We review the request for completeness as well, so that consideration of the request may be made in a timely manner. We then send a confirmation email to the resident, acknowledging receipt of the request and indicating the date on which it will be considered. Finally, we look for an indication that the resident may have deemed the request to be an emergency – a situation where delay has the potential to result in safety concerns or property damage. Special measures are taken to expedite the review and approval of such requests.

The deadline for submitting ARC requests is the 15th of every month, and we typically receive 30 requests for consideration. We compile these requests in a commercial routing software application which maps out the most efficient way for the committee to traverse Turtle Rock and review each request in person. Armed with this map and a copy of each request, we set off on a Saturday morning “drive-around” for on-site reviews, followed by a meeting at the community center to finalize our decisions. Meeting dates are posted on the bulletin board at the community center.

We are able to approve most ARC requests as submitted. Occasionally, requests may conflict in some manner with our community guidelines. We then work with the residents to find ways to modify the request and accomplish their desires while conforming with our standards. We are fortunate to have committee members who have experience in such areas as landscaping, color theory, and construction, allowing us to collaborate as needed with residents and achieve a 95% ARC approval rate.

Our meeting results are then turned over to the CAM, who in turn notifies residents by letter. That leaves us free to start the entire process again from the beginning, for the next month. Far from being repetitive and boring, we find the opportunity to interact with our fellow TR residents, and see the improvements being made in our community, to be a constant source of interest.

Landscape & Grounds

By Kathrin Harris, Secretary L&GC



What a difference a week makes...from drought conditions at the end of June, with Bloomings pulling their hair out trying to keep our grounds irrigated so as not to lose turf or shrubs, to our ponds filling back up and the ground soggy with fabulous rain— all within less than two weeks!

And with these rains again comes the discussion regarding irrigation. Most of us set the timer to run specific times and days, then never look at it again. This schedule may not be enough during spring-time drought, yet too much once the rains start. Alt-



hough the specific turf required by Turtle Rock (St. Augustine Floratam) was developed to be able to tolerate—even need—heat and wet, the rest of the landscaping in our yards often has difficulty dealing with so much water. As both our President and Manager have pointed out on prior pages of this newsletter, it is best to keep your system running *less often* and for

less time during the summer months...until there are again two weeks of hot temps and no rain as we experienced again mid July. What is a homeowner to do? Be vigilant! If you are here during the summer, take a walk around your yard and check for soggy ground, which indicates either too much irrigation, or could even signal an underground leak in the irrigation lines. If you are handy, address any issues you see yourself. If not, call a licensed irrigation contractor. You may even want to simply turn your timer to the OFF position when daily rains occur. If you are not in residence, be sure to have your home-watcher do these checks and notify you of concerns. It is our responsibility to keep our systems functioning properly, and also to water appropriately for the current weather conditions.

The Landscape Committee members were scattered throughout the country in July, so no meeting took place with Bloomings. It had been the intention to begin the installation of the various Board-approved shrub revitalization projects, but Tropical Storm Elsa put a temporary damper on this. Bloomings' manpower is stretched thin as they scramble to mow masses of turf and trim shrubs that have exploded with growth from the summer rains. Fortunately, the entrance island "bullnose" displaying colorful summer flowers remained intact despite the county-managed construction at our north entrance. New projects are scheduled to begin early August, weather permitting.

The Board approved the repainting of our entrance signs at their June meeting, as well as painting the bases of all street light poles. The selected vendor to hopes to begin this project mid August. The Board also approved two new bulletin boards, which will look like those at our entrances and replace two worn-out boards.

Residents of TR LOVE where they live!

nextdoor

Home

Turtle Rock Palmer Ranch

Map

Vaccine Map

Digest

Neighborhood

Help Map

Businesses

Finds

Local Deals

Public Agencies

Events


Real Estate

Safety

Lost & Found

Documents

Search Nextdoor



Tracy Simmons
Turtle Rock Palmer Ranch • 16 hr ago

Grateful for Turtle Rock! Hi, I hope this will reach the right people.

As I walk and bike around Turtle Rock, I feel so grateful to live here! The flowers at the entryway are so pretty; the main entry road trees and plants are so beautifully kept; the sidewalks are freshly cleaned; the new Gate Entry system is fabulous; and, of course, all the neighbors are so friendly. I want to say a big THANKS to all who make this happen. I know running an HOA can often be nothing but complaints ;)...but my husband and I are so grateful for all that continues to happen to make this a fabulous community to be part of! Many, many thanks for all the work you do!


Posted in **General to Turtle Rock Palmer Ranch**

Like

8 Comments

Share

18




Sharon Hurley • Turtle Rock Palmer Ranch

I love living in Turtle Rock.

14 hr ago Like Reply Share

2




Judy Molnar • Turtle Rock Palmer Ranch

Me too, great neighbors which is why we stay!

13 hr ago Like Reply Share

2




Jane Cubito • Turtle Rock Palmer Ranch

My husband and I moved to Turtle Rock in 1995 when it was first being built. We picked out the lot and built the house . We were happy we found it!!!

13 hr ago Like Reply Share

3




Thomas Bass • Turtle Rock Palmer Ranch

So nice to hear something positive in these times. We also have loved our live here for the last 17 1/2 years

13 hr ago Like Reply Share

2




Michael Knowles • Turtle Rock Palmer Ranch

Ditto from me as well. Love the neighborhood and the folks that care.

10 hr ago Like Reply Share

1




Kay Consigny • Turtle Rock Palmer Ranch

Me too! I have lived there 19 years. Great neighbors.

9 hr ago Like Reply Share

1




kathleen jones • Turtle Rock Palmer Ranch

We bought in 2002 and love it here!

8 hr ago Like Reply Share

1



Debbi Voight • Turtle Rock Palmer Ranch

I love living here as well. Its a beautiful community.

15 min ago Like Reply Share

Editor's Note: this is a "Print Screen" from a recent posting on the neighborhood website called "Next Door." It was so positive that I just had to include it, and as Tracy Simmons wrote, we hope it finds the right people: our Board members and all the hard-working volunteers who make TR such a wonderful community!! Sorry for the small print.

10



Turtle Rock Women's Club

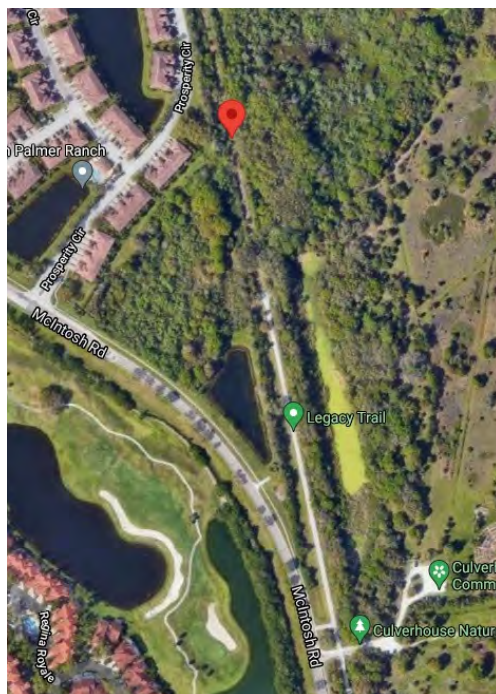
By Jean Contillo



The Turtle Rock Women's Club is back on track with our monthly luncheons. This month, we'll be lunching at Turtles on Little Sarasota Bay. For September, we'll be at Miguel's on Siesta Key, which is always a club favorite. Be sure to check the TRWC newsletter for dates and RSVP deadlines. We just love getting together with you!

Back in May, we enjoyed an update on the Legacy Trail via Zoom. As a thank you, the club sponsored three square feet of the Trail. For more information about the Legacy Trail, click here: <https://www.friendsofthelegacytrail.org/>

Location of our donated area— From: Southwest Corner GPS Coordinate (27.253682, -82.476591)
To: Northeast Corner GPS Coordinates (27.253686, -82.476582)



Save the Date! Our Mix & Mingle event is scheduled for October 30 at the Community Center and promises to be a great evening of Halloween fun.

If you'd like more information on membership or activities, please don't hesitate to reach out to us at TurtleRockWomensClub@gmail.com to find out more.



Turtle Rock Men's Club

By: Ken Rosemann

While many of our Snowbird Members are enjoying a few months up North, we will forego luncheons until September. If you have a location you think Members would enjoy, email it to me.



We wish the following a **Happy August Birthday!** If I have missed anyone, email me and I will update the TRMC website.

Irv Broh, Michael Geramanis, Aaron King

If you know of someone who may be interested in joining the Men's Club, please have them contact me and I will be glad to assist them in the process of joining.

HAIRU

The morning parade
meandering Turtle Rock
people on leashes



CALLING all Photographers!!



The Publishers of our Community Directory have been recycling photos submitted to them over the years for 13 years now. We are looking for some *NEW* and exciting or engaging photos of our beautiful community to grace the COVER, BACK, and inside cover and back pages or our upcoming 2021-22 Directory, scheduled to arrive this fall!

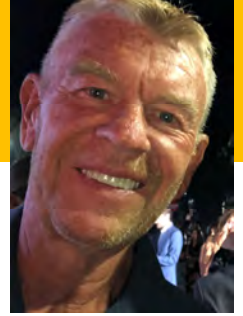
Take a walk through our scenic nature trail, along our Boulevard, or even your own back yard to find picturesque venues to photograph!

Submit your entry or entries to our manager no later than [August 15](#) to have your picture considered! Credit will be given inside the front cover to those whose photos are selected. Send your jpeg format file to

**Communitymanager@
myturtlerock.com**

From the West Corner of...

By: Steve West



Getting Old

Ah, the joys of aging. Plenty of time now to contemplate important issues like why didn't Tarzan have a beard, and how do those dead bugs get inside a sealed light fixture?

As Mom used to say, "Getting old is just a series of doctors' appointments." On my last visit to my doctor he said he needed a stool, urine and sperm sample. I asked my wife, "What did he say?" She said, "He needs your underwear." At my last check-up, the doctor told me they retired my blood type. He advised me about my diet and asked if I knew the one thing that is most dangerous to eat? So it was back in the doghouse when Sue overheard him say, "Yea, wedding cake!" But I did go on a diet; it's called a martini diet. So far I've lost three days. Must be working, at least I figure my butt is shaping up. Every time I walk away from a group conversation, I hear people comment, "What an ass."

Respect for the aging? The bank sends me my annual free calendar one month at a time. Energy? Now I think a night out is sitting on the patio.

As my hearing continues to decline, I considered buying hearing aids. It was them or new LED fog lights for my jeep. Well, as I strained to hear my wife, I repeatedly had to ask, "What did you say?" In frustration she replied, "You shoulda brought your jeep lights!" I reminded her the money we put out on HER hearing aids was not exactly well spent. She was showing them to her girlfriends when asked, "Wow! What kind is it?" To which she answered, "Twelve-thirty."

My knees have gotten so bad, when I bend down to tie my shoes I wonder if there's anything else I can do while I'm down there. This morning I woke up and grabbed my pants and a button fell off, then I picked up my gym bag and the handle fell off, now I'm afraid to go to the bathroom.

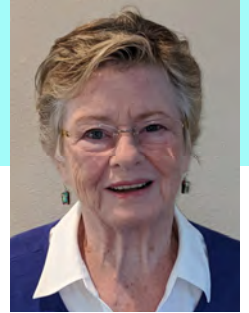
But at least I'm not getting old alone. My wife, Sue, is right in there with me. We tried to count the candles on her birthday cake, but we were driven back by the heat. Sue refers to her wrinkles as laugh lines. Carefully under my breath I comment, "Well something must have been bloody hilarious."

She changed the bathroom's name from "the John" to "the Jim." Now she brags to her friends, "Every morning, first thing, I go to the "gym." She did try jogging, but she kept spilling her wine.

But I guess getting old isn't all bad. Now, at least, I can plan my own surprise parties.

Got FISH?

By: Paula Griffin



We all got the email telling us there would be someone harvesting fish from our ponds, which have become overstocked with non-native fish species. We looked up the species mentioned, tilapia and plecostomus. Pictures below:



We checked in with John Malone and his partner as they glided down our pond one Friday in June. We watched as they pulled up one net cast containing at least 20 large fish. Holy Fin, Batman! There a lot of those bibble fish down there. Malone told us that these fish are sometimes introduced to ponds with the hope of controlling grasses and algae, but the fish often manage to overpopulate the pond, crowding out native species.

They told us that the day we saw them was their second day of harvesting in Turtle Rock. On their first day of harvesting they had taken 1,400 pounds of fish, almost entirely tilapia. Tilapia was all they had caught so far in our pond, too. We know we have some bass in the pond, but apparently they were hiding, and so were the catfish. Halfway down the pond they were already above their ankles in flapping fish.



We asked Mr. Malone how the fish they caught would be used. You were wondering, weren't you? They are sold to gator and turtle farms upstate, where they are ground into meal for gator and turtle chow. Yum.



Natural Assets Committee

By: Michelle van Schouwen, Secretary NAC



The Natural Assets Committee Cares for Ponds, Preserves, Wetlands, and Nature Trail.

During the July Board of Governors meeting, the Board approved a name change for the former *Retention Pond Committee*. In view of the committee's increased stewardship of not only ponds, but also preserves, wetlands, and the nature trail, our new name is the Natural Assets Committee. The Board also approved an updated charter to include these additional Turtle Rock assets.

Turtle Rock is nearing completion on shoreline restoration for ponds 10 and 11 (south and north of Nice Way), the clearing of invasive plants where needed, and gearing up for shoreline restoration on Sabal Lake for September (pond 13, west of TRB). At this writing, we're continuing the removal of a multi-part floating island from pond 19 (Far Oak Circle).

We ended up prioritizing some shoreline restoration and some repair projects and improvements (mitered ends, which are the concrete beveled structures that hold pipes that permit water to flow between ponds; drainpipes; and storm catch basins). However, we are eager to move forward with aquatic plants as well. Soon, we will oversee planting of desirable aquatic plants (including spike rush, arrowhead and pickerelweed, plus yellow canna and fragrant water lily for pond 7, the butterfly pond). First ponds in line for plantings are:

- Pond 2 Benchmark Court and TRB
- Pond 4 Between Sabal Lake Circle & Deerbrook Circle
- Pond 5 Sweetmeadow, west of TRB
- Pond 7 Pond 7 Butterfly Garden Pond
- Pond 8 Meadow Rush Loop
- Pond 10 Southside of Nice Way
- Pond 11 Northside of Nice Way
- Pond 26 Sweetmeadow, Timber Chase, Meadow Rush
- Pond 27 Sweetmeadow, Ridgelake Place, Nice Way
- Pond 31 Wild Flower Court and Little Brook Court

Continued on page 16

Natural Assets Committee, Continued

We're no longer seeing the low water levels of this spring, and are always grateful that our retention ponds accommodate typical heavy summer rains, which is their principal purpose.

The committee has consulted with Sarasota County preserve oversight staff, and we have the green light to begin restoring older portions of the Turtle Rock nature trail, a trail that starts on the far side of the bridge behind the community center. This project will encourage residents to enjoy a stroll on an improved hammock and pondside pathway. This process is likely to take several months, and we'll keep you updated.

Contractor James Maloney continues to catch and remove invasive tilapia and plecostomus from the ponds. He's been catching about 1,400 pounds of invasive fish per visit.

Thanks for your ongoing interest in and support for healthy, beautiful, functional Turtle Rock natural assets.

Photos courtesy Melody Barackman: Restored Shoreline with LMZ (pond 11) and Adding Sod (pond 10).

Logo Created by Barry Domenick, Turtle Rock Resident

Quotable Quotes

Freedom is never more than one generation away from extinction. We didn't pass it to our children in the bloodstream. It must be fought for, protected, and handed on for them to do the same.

— **Ronald Reagan**

No act of kindness, no matter how small, is ever wasted.

— **Aesop**

If my boss knew how unproductive I am on Fridays, he wouldn't want me here either.

— **James Johnson**

BIRD NOTES

By Janet Smith



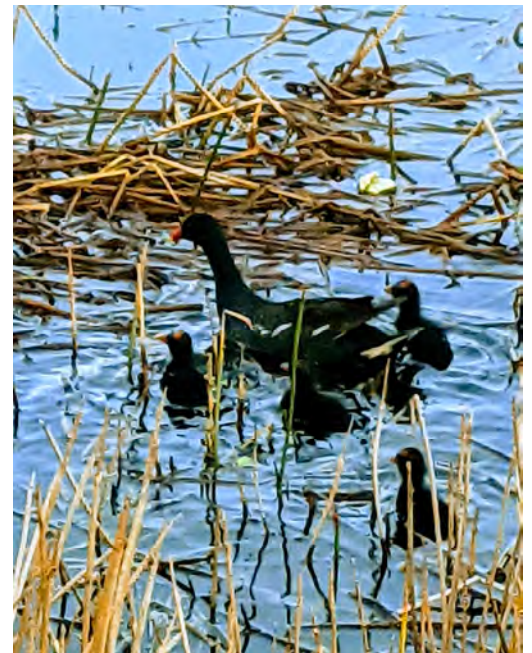
The Common Gallinule

On my daily walk I was delighted to see a Common Gallinule and her chicks in the pond near the Community Center. These birds can swim like a duck even though their long toes don't have webbing, but those toes spread out to allow them to walk across floating vegetation. Flying is problematic. They can, but it's not pretty.

Common Gallinules are easily identifiable by the brilliant red shield on their forehead that comes down to an equally red bill with a yellow tip. They are generally dark with a white racing stripe along their sides. Their legs are yellow and their toes are light gray. Common Gallinules are 12.6 to 13.8 inches long with a wingspan of 21.3 to 24.4 inches.

Common Gallinules like fresh or brackish marshes, ponds and lakes with a mix of submerged, floating and emergent aquatic vegetation. They are found from Chile to Canada. Gallinules eat a lot of things: snails, insects, worms, vegetation and seeds. They will use their feet to flip over leaves to grab snails and insects hidden below.

During courtship, males chase females, then both come to a stop, bow deeply and preen each other's feathers. Another courtship act is to lower the head and raise the tail to expose white patches under the tail. Males will sometimes mate with more than one female. Females will sometimes share a mate with a daughter and raise the chicks cooperatively. Often older siblings will help feed chicks.



Nesting material is collected by the male. The female arranges this into a bowl about 10 to 12 inches wide. The nest will often have a ramp leading down to the water. The female lays 3 to 15 eggs and incubates them for 19 to 22 days. Eggs are light gray with darker spots and specks. Chicks hatch with their eyes open and covered in dark down feathers. Chicks have spurs on their wings to help them climb into the nest or grab onto vegetation. Chicks can feed themselves within three weeks, but often get help from parents and older siblings for several weeks.

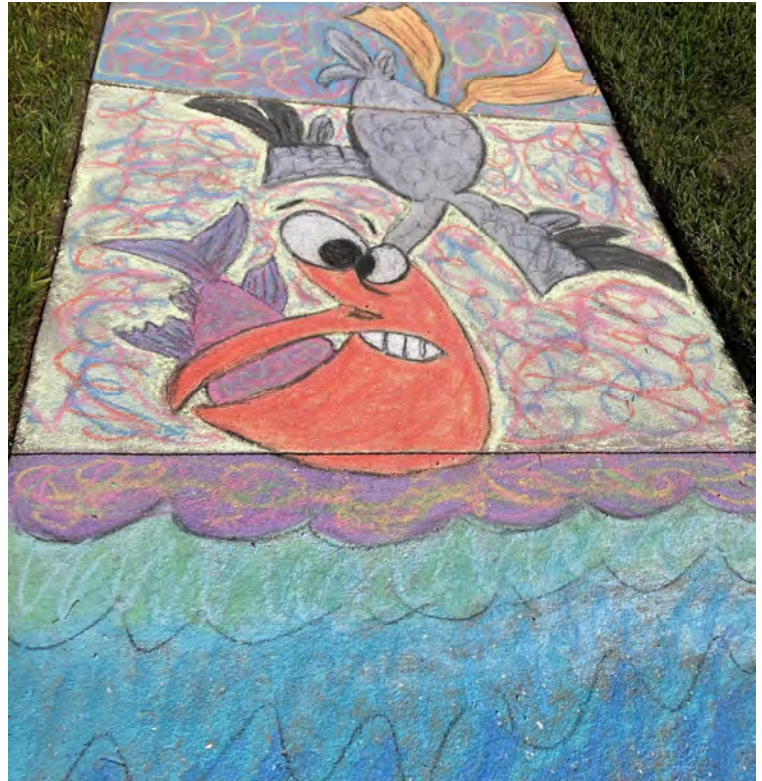
The Common Gallinule used to be called the Common Moorhen, but in July 2011, the American Ornithologists Union split it from the European Common Moorhen.

Chalk Art during Corona...

Article adapted from Paula Griffin, May 2020 Art By: Donna Wolfson



Turtle Rock's very own screever (a chalk artist who uses their talent to draw what



are necessarily temporary works of art)

has had a hard time finding dry days during July to delight us with her humorous paintings. If you visit the sidewalk in front of her house at 5250 Far Oak Circle and it has been dry for a while, you are likely to find one or two of her masterpieces.

Donna had no formal art training. As sailors, she and her husband Barry traveled throughout the Caribbean, and were attracted to the vibrant culture, music, cuisine, and art. She painted a wall mural for a local fitness club, and refinished an old cocktail table for their family room with an abstract Haitian design. Donna's sidewalk art began in March of 2020, with the hope to provide a smile to her neighbors during Corona lockdowns. For over 16 months now, her art has "drawn" a LOT of interest from kids and adults alike. She enjoys the fun people have coming by to visit her sidewalk, and says she is grateful for the gifts of chalk people have left by her mailbox, because a painting this size takes a lot of chalk. She likes to say, "Color outside the lines, use the full box, and always bring unexpected joy to someone's life." Actually, with this month's painting (left), Donna was being passive aggressive toward her kitchen contractor. One never knows what her next subject will be...we'll have to visit to find out.

Congratulations to Gary Wells!

who found the word **XERTZ**, pronounced 'zerts'. It means 'to gulp something down quickly and/or in a greedy fashion'. In most cases, it is used to describe drinking, but it may also describe someone eating quickly. Example sentence: "As soon as I finished the half marathon I needed to **xertz** a bottle of water."

Find this month's outlandishly inappropriate word in one of our many articles in this Newsletter and send your guess to:

Communications@myturtlerock.com.

Your name will be entered into a drawing to receive the \$25.00 gift card,

Sponsored this month by Mira Mar Pool Care.

The Winner will be announced in the next Newsletter.

One entry per email please. Good luck!

The Communication Committee

*The committee is looking for staff writers and photographers— **AND a new editor!** If you have a knack for writing, have ideas for a monthly column or are willing to take photos of interest to the community, please contact us at communications@myturtlerock.com.*

THANKS for getting involved!

Committee Member; and Newsletter Staff

Patricia Tarlton, David Tarlton, Angela Hilton, Grace Sammon, Emily Miller, Steve West, Judy Bentz, and Ed Olson of Sunstate Management.

Staff Writers Paula Griffin, Diane Glynn

Board Liaison: Patrick Murphy

Editor of August Edition: Kathrin Harris

Proofreader: Charlotte Jones

Send comments, suggestions and articles for consideration to:

communications@myturtlerock.com

(Text must be in Word, Photos as JPEG.)